

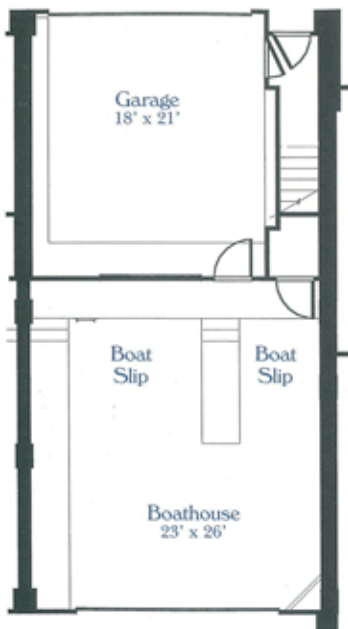
# The Boathouse 20

Similar Unit: 23

- Overlooks private lagoon
- Two-car attached garage
- Two-slip boathouse — 23' x 26' total
- Living quarters total 1,965 square feet
- Additional decks offer 214 square feet of outdoor living space
- Open floor plan second level includes living room, dining room, large galley kitchen, family room, utility room, full bath and deck
- Third level includes sitting room; master bedroom suite with walk-in closet, master bath and deck; guest suite with bedroom, walk-in closet and full bath

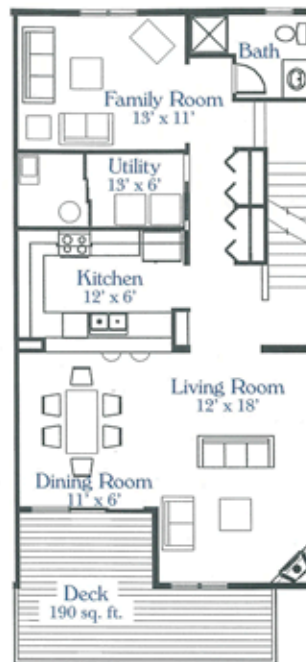
*Welcome to Windjammer Cove  
A timeless tradition renewed*

*From its beautiful setting along the water's edge on Crooked Lake, to the unique boathouse style of each cottage, everything about Windjammer Cove is designed to create the ambiance of historic northern Michigan, and the amenities of a modern-day resort community.*



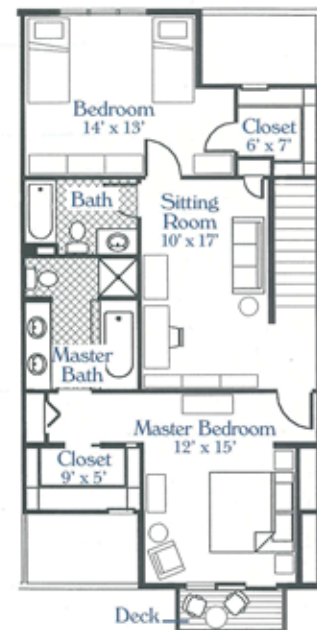
### Ground Level

*Living Space 68 sq. ft.  
Attached Garage 378 sq. ft.  
Boathouse 598 sq. ft.*



### Level Two

*Living Space 975 sq. ft.  
Deck Space 190 sq. ft.*



### Level Three

*Living Space 922 sq. ft.  
Deck Space 24 sq. ft.*

*For more information contact the exclusive Realtors for Windjammer Cove & Marina:*

**Graham Real Estate**  
198 East Main Street  
Harbor Springs, MI 49740  
231-526-6251

**Boyne Realty**  
102 E. Main Street  
Harbor Springs, MI 49740  
231-526-3190

# Floor Plan Unit 20